



BIG HORN, CUSTER, ROSEBUD, AND TREASURE COUNTY
BRINGING COMMUNITIES TOGETHER



TAKE  DOWN

TOBACCO

NATIONAL DAY OF ACTION

04.01.25



QUITNOW
MONTANA
QuitNowMontana.com
SMOKING | VAPING | CHEW



DEPARTMENT OF
PUBLIC HEALTH &
HUMAN SERVICES

TAKE DOWN TOBACCO
NATIONAL DAY OF
ACTION IS BACK ON
APRIL 1, 2025! ON THIS
DAY OF YOUTH-LED
ACTION, ADVOCATES
AND THEIR
COMMUNITIES COME
TOGETHER TO STAND
UP TO BIG TOBACCO
AND CALL FOR
CHANGE. SAVE THE
DATE AND FOLLOW
@TAKEDOWNTOBACCO
FOR UPDATES! TEXT

UPCOMING
EVENTS

APRIL MAMMOGRAM BUS
SCHEDULE

APRIL 16, HEALTH FAIR
ST. LABRE 10 TO 1

RHCC HEALTH FAIR APRIL 24



Mammogram Bus is Coming to Town

Call Yellowstone Breast Center to schedule a mammogram
@ 406-237-4373

APRIL 2025

ST VINCENT MOBILE MAMMOGRAPHY SCHEDULE

SUNDAY	MONDAY	TUESDAY	WEDNESDAY	THURSDAY	FRIDAY	SATURDAY
		1 BLOCKED	2 BLOCKED	3 BLOCKED	4 BLOCKED	5 BLOCKED
6	7 IMH LAUREL CLINIC	8 BILLINGS OB/GYN	9 IHS CROW AGENCY	10 BIG TIMBER PIONEER MEDICAL	11 MT STATE WOMENS PRISON	12 IMH LAUREL CLINIC
13	14 SHEPHERD SCHOOLS	15 IHS LAME DEER	16 IMH LEWISTOWN CLINIC	17 IMH ABSAROEKE CLINIC	18 BLOCKED MAINTENANCE	19 IMH NORTH SHILOH CLINIC
20	21 IMH HEIGHTS CLINIC	22 FORSYTH ROSEBUD HEALTHCARE	23 IHS LODGE GRASS	24 IMH LAUREL CLINIC	25 IMH LOCKWOOD CLINIC	26 IMH BROADWATER CLINIC
27	28 RYEGATE (AM) LAVINA (PM)	29 IHS LAME DEER	30 ROCKY MOUNTAIN COLLEGE			

FREE MAMMOGRAM

No Insurance or can't afford a mammogram?

Montana Cancer Control Program is here to help.



2024 Income Guidelines

- 1 person in home \$37,650
- 2 people in home \$51,100
- 3 people in home \$64,550
- 4 people in home \$78,000
- 5 people in home \$91,450

Easy Enrollment QR Code:



Contact MCCP:

Melanie Frame email: melanie.frame@onechc.org or call 406-874-8705

ROSEBUD
COMMUNITY
HOSPITAL

HEALTH FAIR

Thursday, April 24th
9am-2pm
Exhibit Hall, Rosebud
County Fairgrounds

Explore and gain insights from
the health-related services
available in our community!

GAMES **BROCHURES**
FREE SNACKS **GIVEAWAYS**
DISPLAYS **PRIZE DRAWINGS**
VISION SCREENINGS

- RHCC Laboratory
- RHCC Providers
- RHCC Occupational Therapy
- RHCC Transportation
- RHCC Skilled Nursing/LTC
- Caring Foundation of Montana
- Samantha Beyl doTERRA
- Forsyth Garden Club
- Eastern MT Mental Health
- Senior Center
- Stevenson and Sons
- SugarBEAT Enterprise
- Treasure County Public Health-
- Tobacco Prevention
- Range
- Rosebud County Fire
- Department
- Yellowstone Pharmacy
- Zen on the River



Event Sponsors

THANK YOU!



RANGE™

For any questions or to reserve a booth as a local health-related service, please reach out to Rachel Fritz at rfritz@rosebudhealthcare.com or call 406-346-4237!

APRIL 26TH 2025

WITHOUT SUGAR
WITHOUT SUGAR
WITHOUT SUGAR
WITHOUT SUGAR
WITHOUT SUGAR

LIFE IS BETTER

8TH ANNUAL SUGAR RUSH

-5k Run/Walk (\$35)*

-1 Mile Fun Run/Walk (\$25)*

***Includes shirt**

Hardin Fairgrounds



In person race starts at 10am

157 Sawyer Loop. Hardin, MT 59034

For more info call 406.665.4103

REGISTER: bit.ly/SugarRushSignUp

Proceeds go to: Raise awareness for diabetes /
Diabetes Prevention Program / Diabetes Support Groups

**F
A
M
I
L
Y**

**Saturday May 17th
12-3pm**

**F
U
N

D
A
Y**

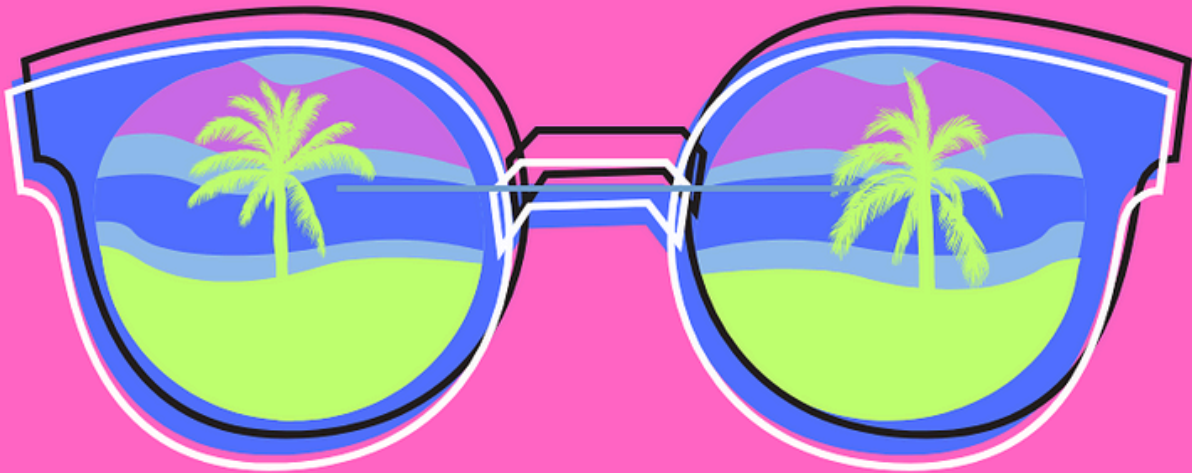
- 
- **Door Prizes**
 - **Photo Booth**
 - **Gifts & Games**
 - **Face Painting**
 - **Yummy Snacks**
 - **Family Health**
 - **Interactive Zoo animals**

**Big Horn Center
200 N Mitchell Ave
Hardin, MT**

BHC Public Health, SCL
Health now Intermountain
Health, One Health, IHS,
HRDC, WIC, Big Horn Hospital
Association, Best Beginnings,
Kindergarten Readiness
Center, Early Childhood
Intervention, Hardin Chamber
of Commerce, Tobacco
Prevention, MT ZOO, BHC
Museum, Helping Hands Food
Bank, One Health Hope Drop
in Center, Big Horn County
Prevention / Mental Health
Center, Messengers for
Healthand, Parenting
Montana.

SAVE THE DATE

REACT SUMMIT



JUNE 19 & 20, 2025

CARROLL COLLEGE

Helena, MT



TEENS ONLY!
Confidential and Free



Quit Vaping,
Smoking, or Chewing.
Text "Start My Quit"
to 36072

MY LIFE  MY QUIT™

CONTACTS:

DEB FRENCH, RN
TREASURE COUNTY PUBLIC HEALTH NURSE
(406) 342-5886 OFFICE
(406) 671-9102 24/7
(406) 342-5951

JANE LAMB
TOBACCO EDUCATION SPECIALIST
WEBSITE COORDINATOR
NEWSLETTER COORDINATOR
(406) 351-2139

TORI KESTER
TOBACCO EDUCATION YOUTH ADVOCATE
(406) 351-9143

PAST AND CURRENT NEWSLETTERS
ARE ON THE
TREASURECOUNTYHEALTH.COM WEBSITE

TREASURE COUNTY PUBLIC HEALTH
P.O. BOX 201
405 PIONEER AVE.
HYSHAM, MT. 59038



FIND US ON:
FACEBOOK
TWITTER
INSTAGRAM



CHECK OUT
CALENDAR OF
EVENTS



ALL LOGO'S AND IMAGES ARE LINKED TO WEBPAGES

